

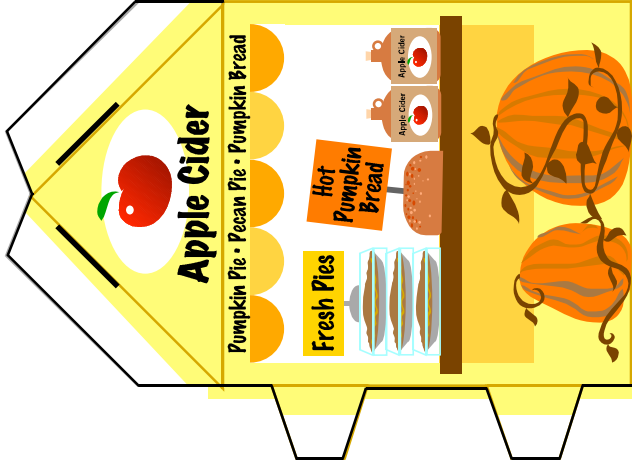
# Meddybemps Miniature Village™ from Chateau Meddybemps® Pumpkin Stand

## To assemble:

- Cut the building from this sheet with scissors. Cut slits carefully with hobby knife.
- Fold and gently crease tabs, corners of building, roof panels and bottom flaps.
- Slip tabs into slots. Save bottom flaps until last.
- Fold bottom flaps under in numerical order. Flap 4 is last and should tuck under Flap 1 to hold them all in place. Use glue or tape for permanent assembly.

For more ideas and inspiration, visit [www.meddybemps.com/trains/village.html](http://www.meddybemps.com/trains/village.html).

Cut out along black outline.



2



Cut out around top and sides of pumpkin and sign.  
Slide through slit where roof meets awning.

Cut slits for tabs where you see heavy black lines.



3



4

Meddybemps Miniature Village  
Pumpkin Stand  
© 2007, 2015 Jerry Jindrich.