

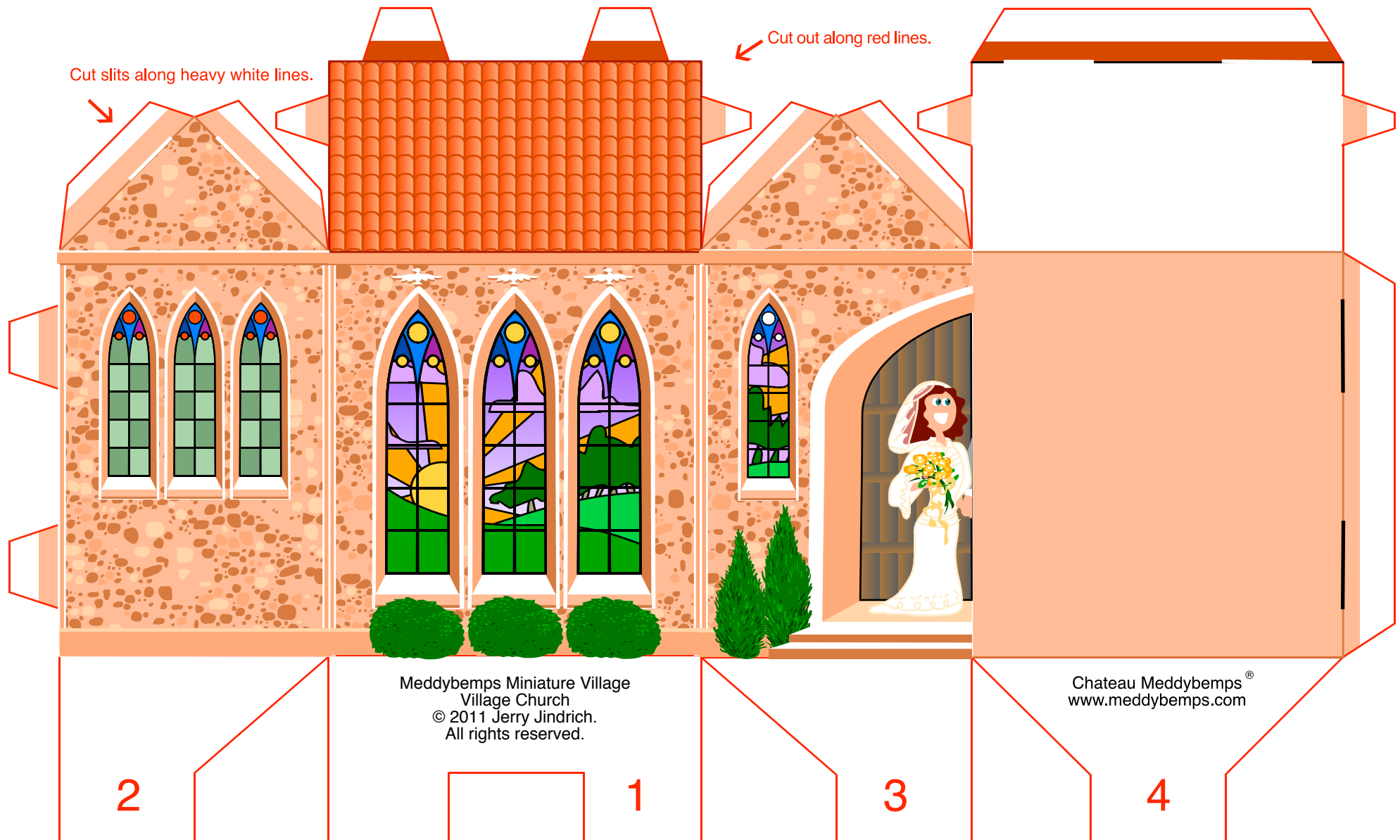
Chateau Meddybemps®

Meddybemps Miniature Village™ Village Church - A

To assemble:

- Cut the building from this sheet with scissors. Cut slits carefully with hobby knife.
- Fold and gently crease tabs, corners of building, roof panels and bottom flaps.
- Slip tabs into slots. Save bottom flaps until last.
- Fold bottom flaps under in numerical order. Flap 4 is last and should tuck under Flap 1 to hold them all in place. Use glue or tape for permanent assembly.

For more ideas and inspiration, visit www.meddybemps.com/trains/village.html.



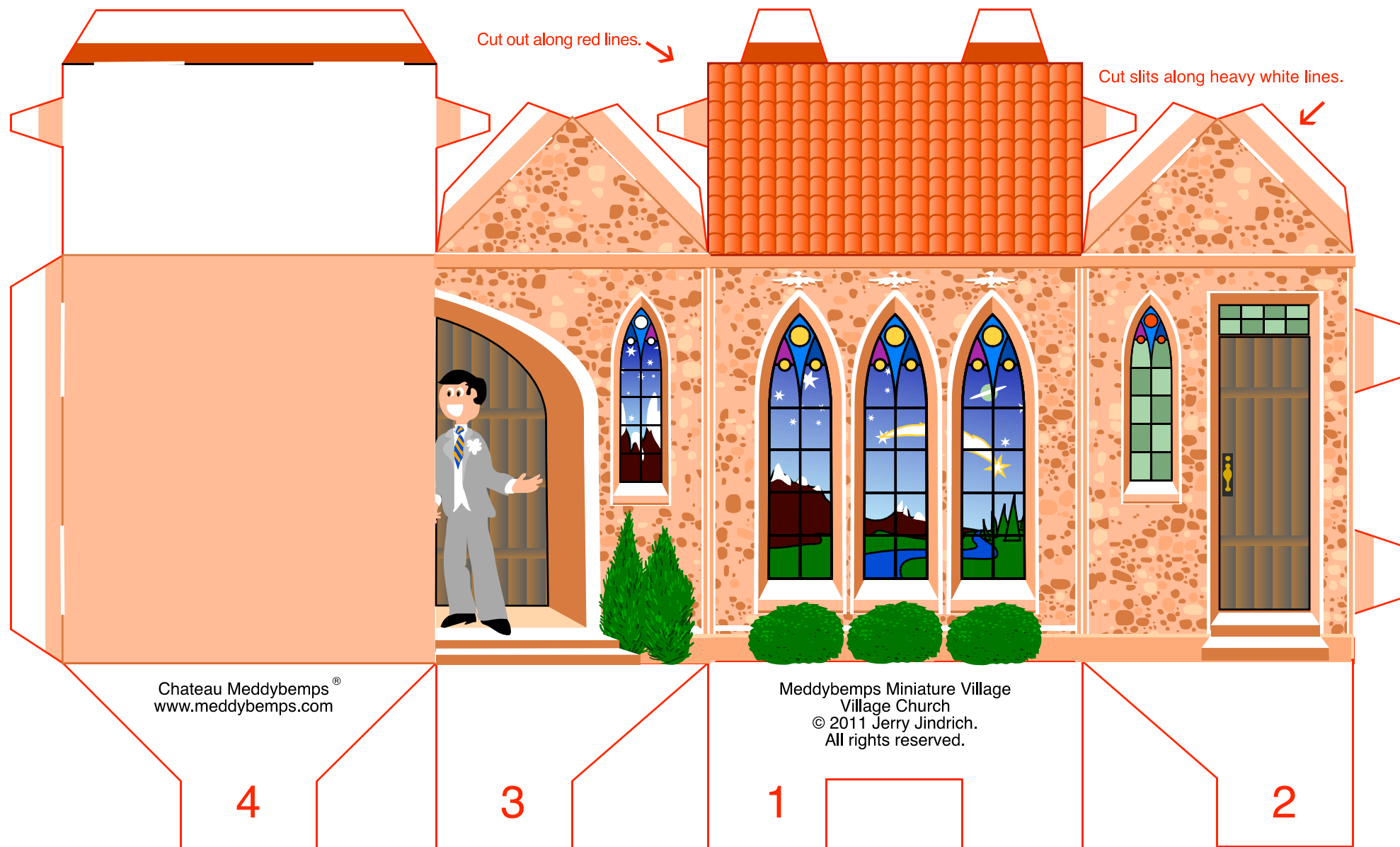
Chateau Meddybemps®

Meddybemps Miniature Village™ Village Church - B

When parts A and B have been assembled, put them side by side so the newlywecs appear to be leaving the church together.

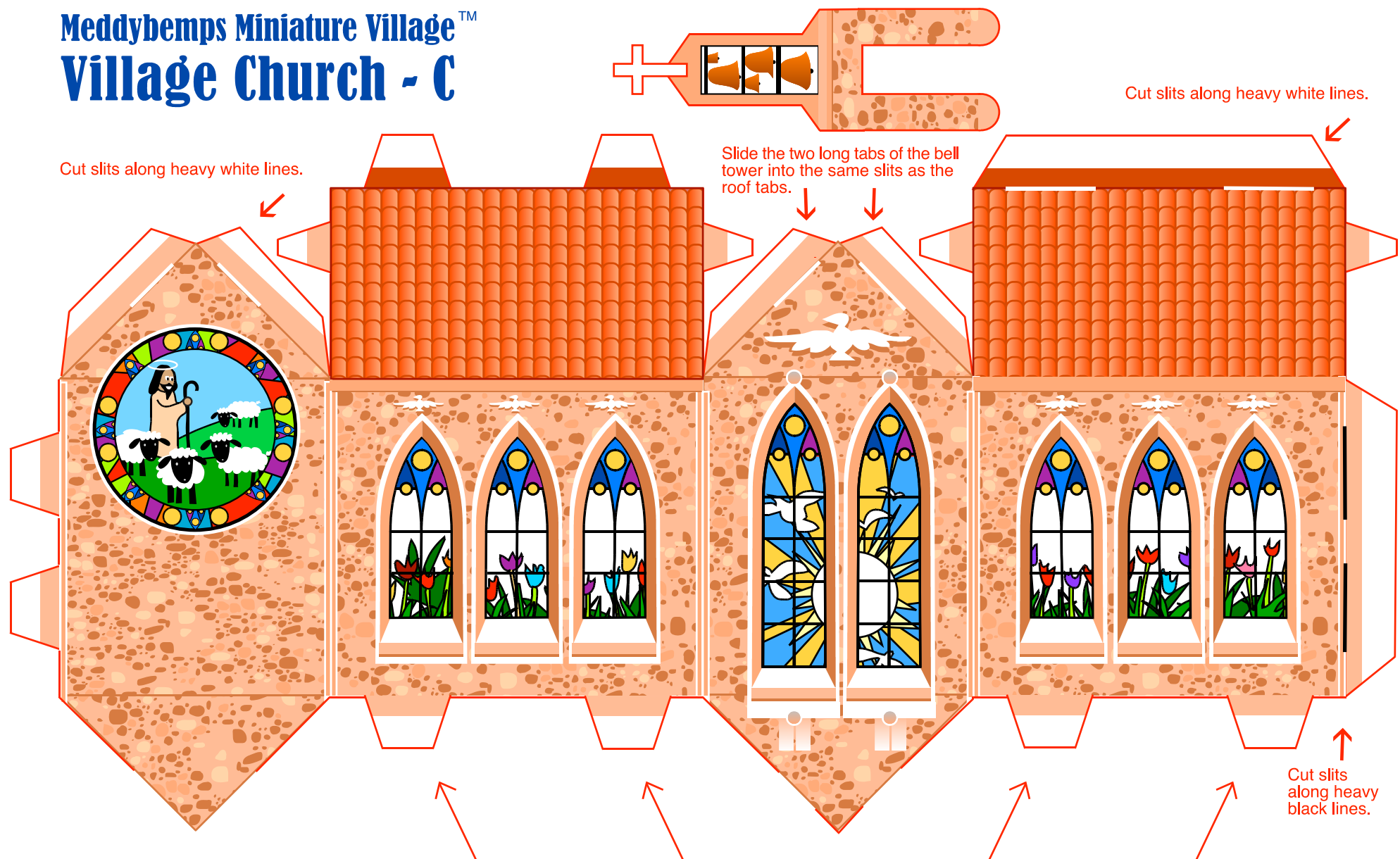
Join parts A and B together with a piece of tape stretched across the bottoms. Bottom flap 4 of A will back up to bottom flap 4 of B.

Then assemble and add the upper floor, C. Finally, add the bell tower.



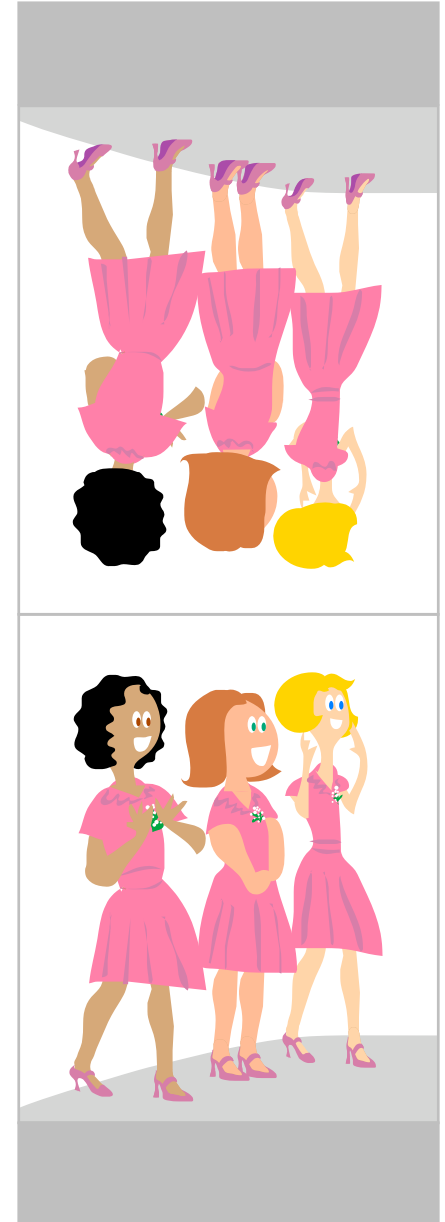
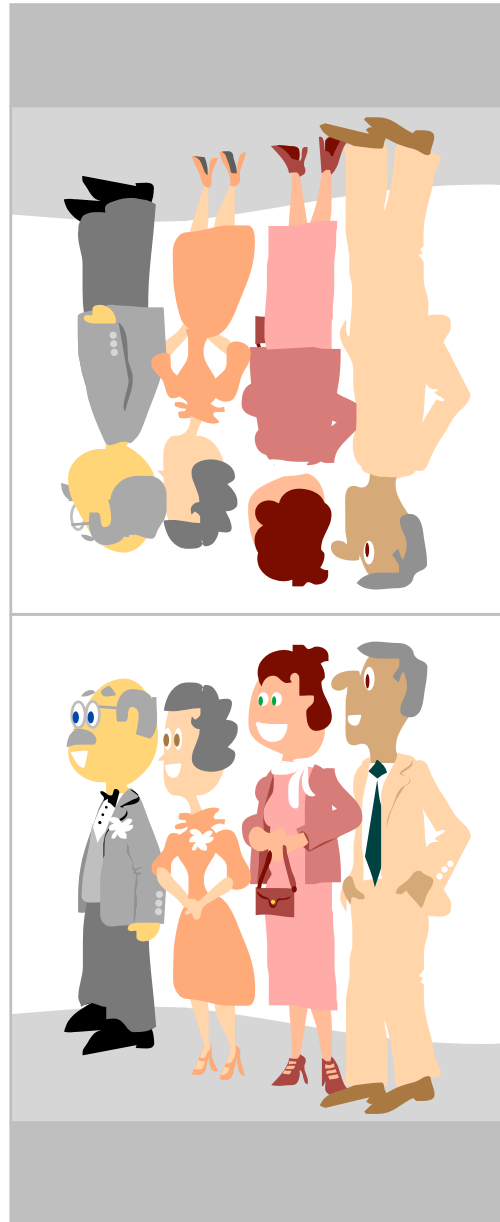
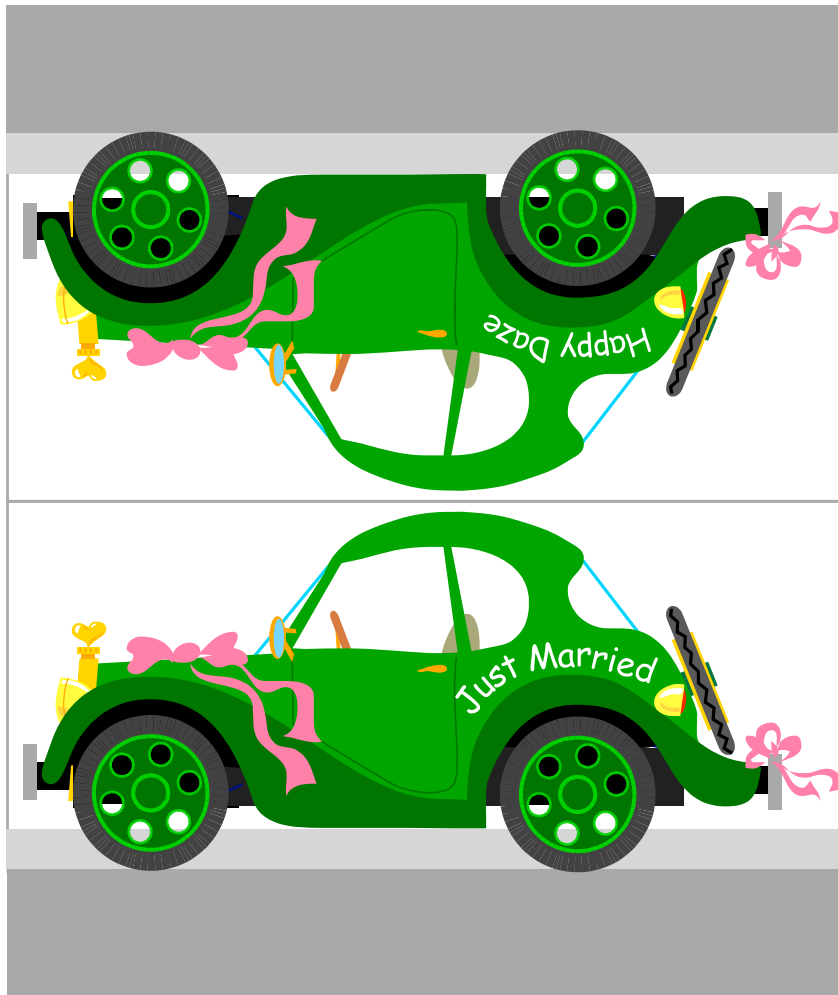
Chateau Meddybemps®

Meddybemps Miniature Village™ Village Church - C



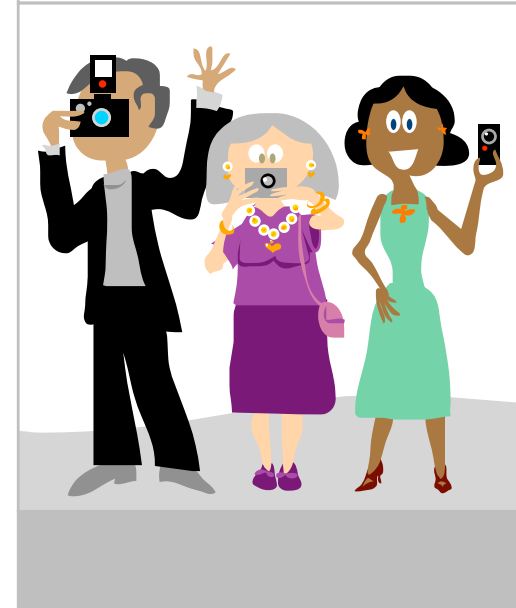
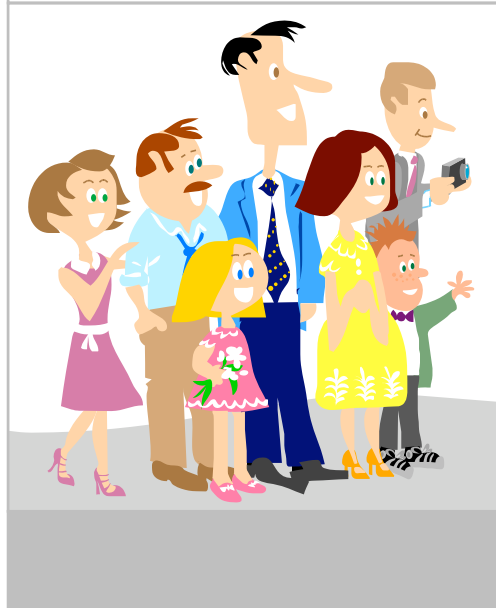
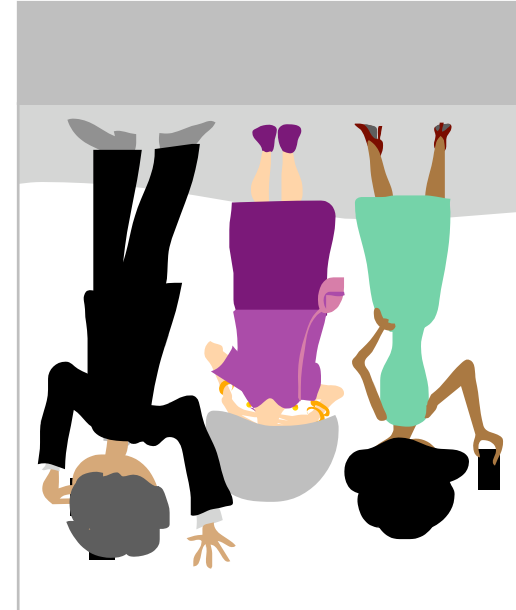
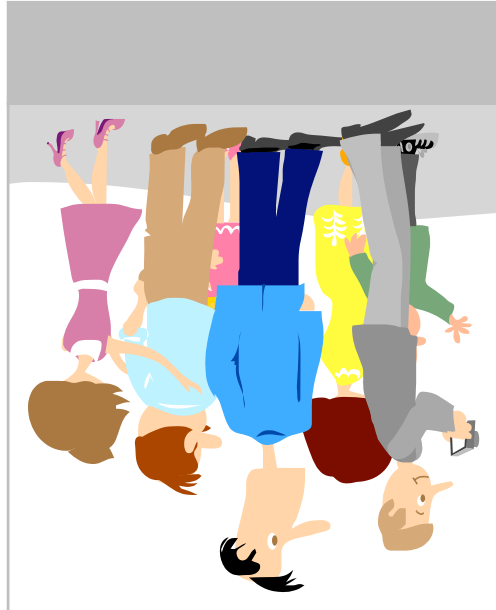
Chateau Meddybemps®

Meddybemps Miniature Village™
Village Church - D



Chateau Meddybemps®

Meddybemps Miniature Village™
Village Church - E



Meddybemps Miniature Village
Village Church
© 2011 Jerry Jindrich.
All rights reserved.