

Meddybemps Miniature Village™ Christmas Market Pastries & Cakes

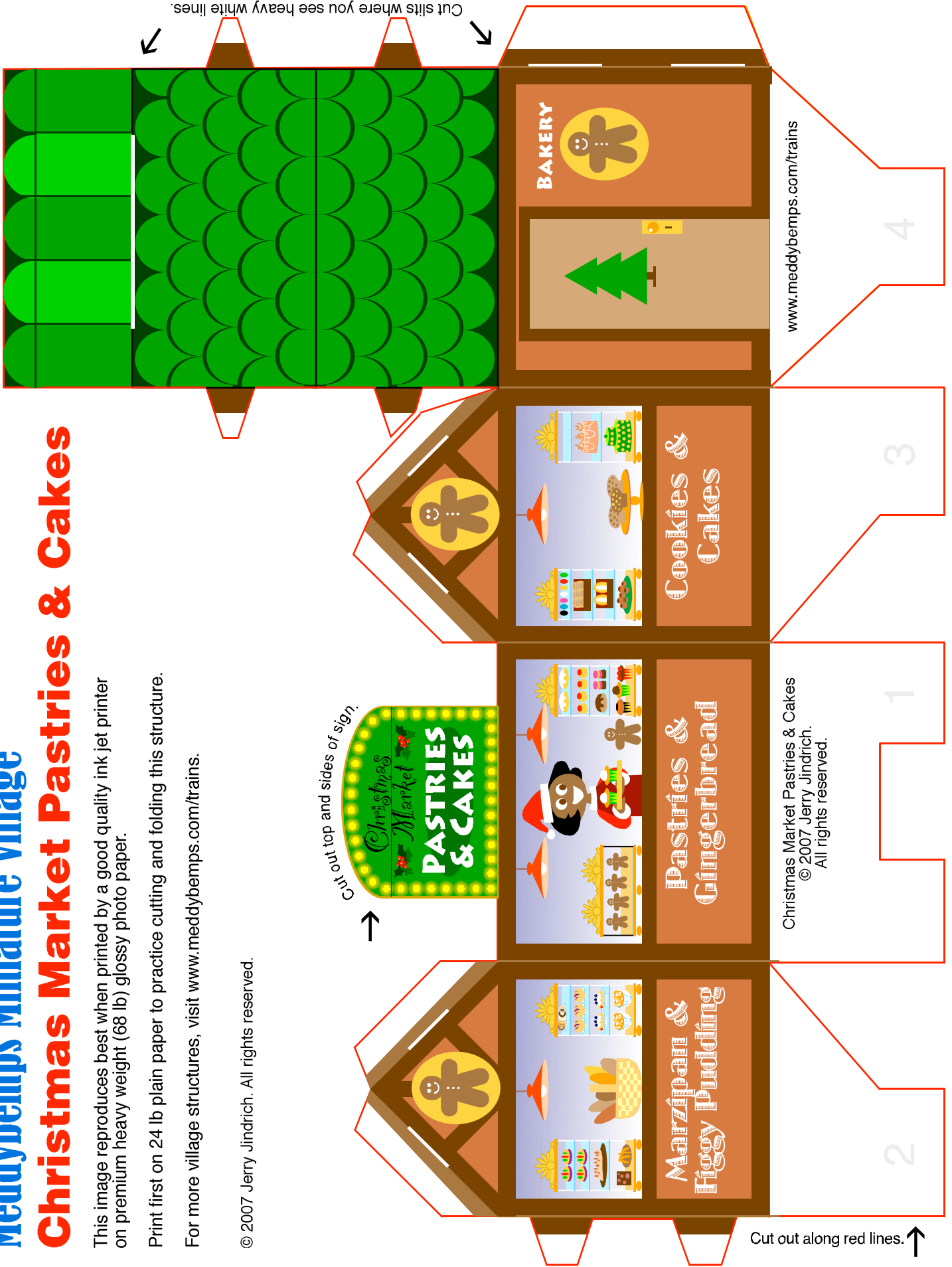
This image reproduces best when printed by a good quality ink jet printer on premium heavy weight (68 lb) glossy photo paper.

Print first on 24 lb plain paper to practice cutting and folding this structure.

For more village structures, visit www.meddybemps.com/trains.

© 2007 Jerry Jindrich. All rights reserved.

Optional: cut out along scallops.



Cut out top and sides of sign.

Cut slits where you see heavy white lines.

Cut out along red lines.

Christmas Market Pastries & Cakes
© 2007 Jerry Jindrich.
All rights reserved.

www.meddybemps.com/trains